



2014-2024

What have we achieved?

2<sup>nd</sup> October 2014





# Reviews



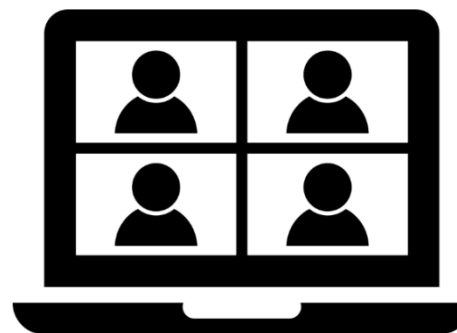
50 Institutions



150 Programs Reviewed  
3 Evaluation of Research Centres  
16 Institutional Procedures  
33 Programme Procedures  
23 Collaborations with other Agencies



4 Benchmarking Projects



4 Online Visits



# Reviews



3 Evaluation of Research Activity



8 Project Evaluations



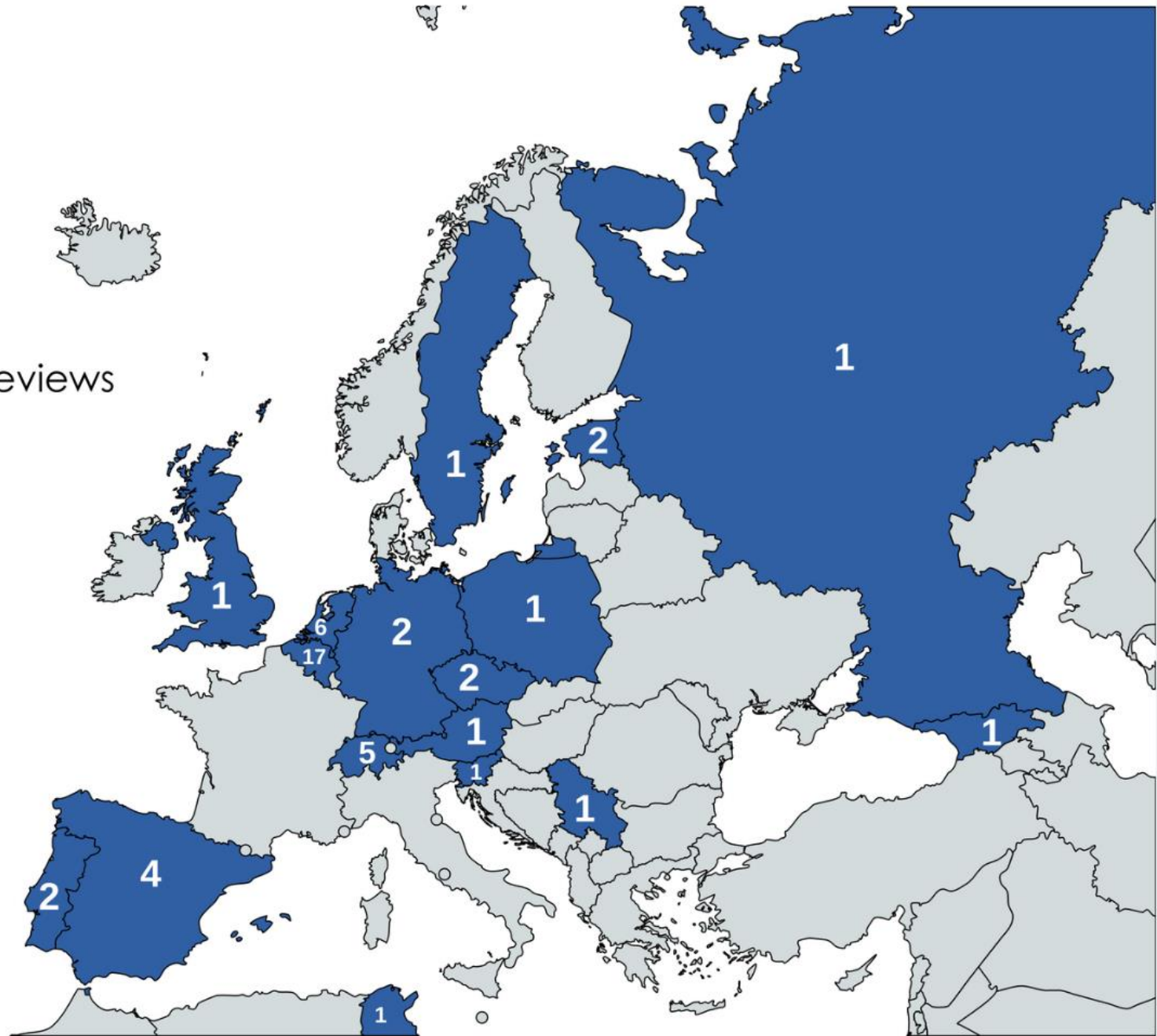
2 Reviews of pre-college. Institutions



8 Consultative Visits



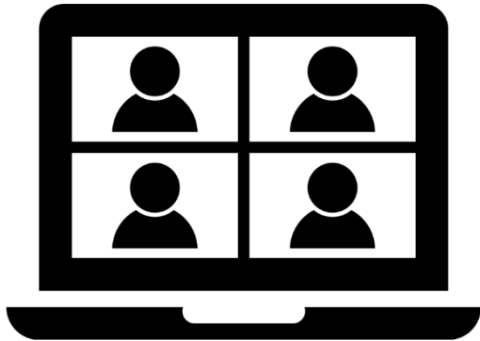
■ MusiQuE Reviews



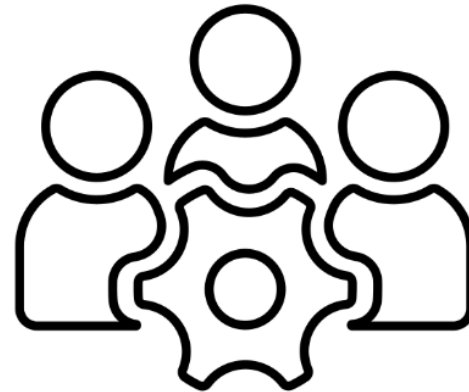


# Training opportunities

5 Webinars since 2015



10 Training Sessions



People Trained



# Partners

PEARLE   
Live Performance Europe

  
MUSIC SCHOOL UNION . EU



Association Européenne des  
Conservatoires, Académies de  
Musique et Musikhochschulen





# MusiQuE Board



**Helena Maffli**



**Géza Kovacs**



**Cristopher  
Caine**



**Mist Thorkelsdottir**



**Martin Prchal**



# MusiQuE Board



**Ankna Arockiam  
(AEC)**



**Asbjorn Keiding  
(PEARLE)**



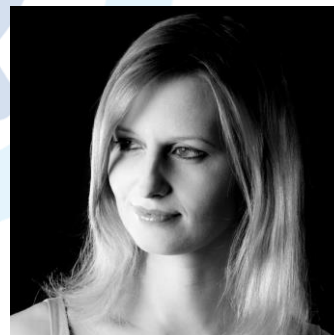
**Michaela Hahn  
(EMU)**



**Orla McDonagh  
(AEC)**



**Jacques Moreau  
(AEC)**



**Lies Colman  
(AEC)**



**Gerhard Sammer  
(EAS)**





# MusiQuE Staff



**Linda Messas**



**Jef Cox**



# MusiQuE Office



**Linda Messas**  
(Director)



**Ana Alvarez**  
(Review Officer)



**Crina Mosneagu**  
(Review Officer)



**Basia Kowalczyk**  
(Review Officer)



**Daniel Rivera**  
(Intern)



# MusiQuE Peer-Reviewers





# MusiQuE Peer Reviewer Register



142 Peer-reviewers (excl. students)

12 Experts in other disciplines

18 Student Peer-reviewers



# Achievements 2014-2024





# Strategic Plan's Objectives by 2025

1. MusiQuE is the leading provider of external quality enhancement services to (higher) music education institutions
2. MusiQuE is a recognised and well-respected contributor to quality assurance in higher education
3. MusiQuE's procedures continue to promote, embed and disseminate a broadly-supported quality culture with respect to the specific contexts and individual characteristics of (higher) music education and its institutions
4. MusiQuE is a well-established organisation relying on high personnel and on a sound financial basis



1 – By 2025, MusiQuE is:

**the leading provider of  
external quality enhancement services  
to (higher) music education institutions**



# Registration on EQAR

Since 2016: MusiQuE is registered on EQAR

*[the European QA Register for Higher Education]*



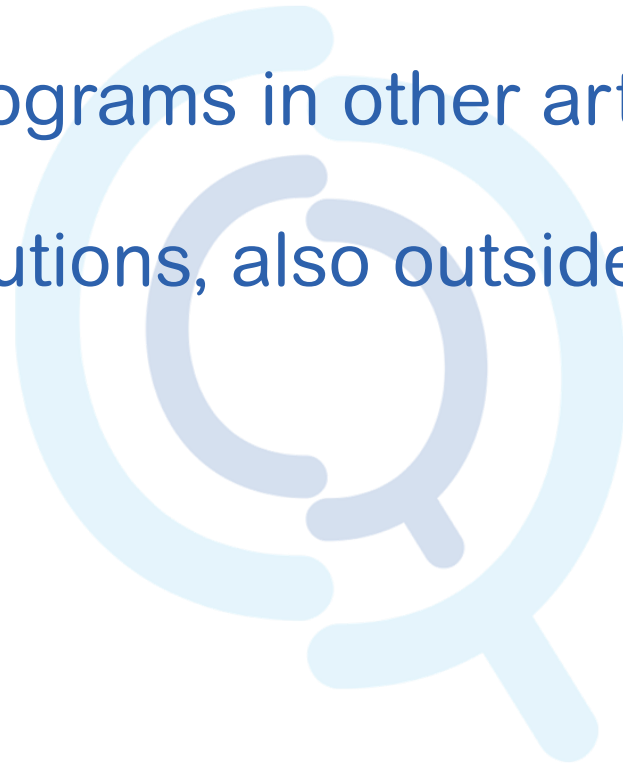
- Compliance with the Standards and Guidelines for Quality Assurance in European Higher education Area (ESG)
- Institutions can see the procedures formally recognised in their national contexts





## Positive Reputation and Increased Demand

- High level of integrity – transparency, independence and objectivity
- Growing interest from programs in other art forms (dance, theatre)
- Growing interest of institutions, also outside Europe







# Awareness of Developments in Society and Music

- Maintenance of strong relations with AEC, EMU, EAS and Pearle\*
  - ✓ Consultation process of AEC, EMU and EAS members to revise standards
- Changes recently introduced in the standards:
  - ✓ More emphasis on students' voice in the decision making
  - ✓ Address new themes:
    - sustainability, health and well-being, digitality, lifelong learning, engagement with the social context



2 – By 2025, MusiQuE is:

**a recognised and well-respected  
contributor  
to quality assurance in higher education**



# Collaboration with National Agencies



Национальный центр  
общественно-профессиональной  
аккредитации



AQU CATALUNYA



Agentur für  
Qualitätssicherung  
und Akkreditierung  
Austria



NVAO



HAKA

Eesti Hariduse  
Kvaliteediagentuur





# Contribution to Policy Dialogue

- **Gathering information + advocating** for subject-specific and international QA
  - ✓ Founding member of EASPA (Europ. Assoc. for Subject-Specific Accreditation)
  - ✓ Affiliation to ENQA (Europ Assoc. for Quality Assurance in Higher Educaion)
  - ✓ Regular attendance ENQA meetings, EQAF (Europ. QA Forum), contribution to surveys
  - ✓ Articles published and presented at EQAF

# MusiQuE Articles



## Articles

How to make quality assurance processes more meaningful to teaching staff – a proposal from the field of music	2016 <a href="#">Download</a>
How to support Quality through International Activities – Case studies from the field of higher music education	2015 <a href="#">Download</a>
Embedding quality assurance in the 'Fachkultur': reconciling diversity and common standards through a discipline-based approach to quality assurance	2014 <a href="#">Download</a>
International cooperation in discipline-specific quality assurance: NCPA-AEC joint accreditation of Russian higher education programmes	2012 <a href="#">Download</a>

# MusiQuE Position Paper

## MusiQuE position paper on the European Quality Assurance and Recognition System

January 2024



### How to overcome challenges and obstacles to cross- border quality assurance in higher education

#### Introduction to MusiQuE – Music Quality Enhancement

**MusiQuE – Music Quality Enhancement** ([www.musique-qe.eu](http://www.musique-qe.eu)) is a cross-border subject-specific organisation for quality enhancement in higher music education. Its mission is stated as follows:

*MusiQuE works internationally to uphold and advance the quality of music education*

Operating throughout Europe and beyond, MusiQuE believes in the strength and added value of involving international perspectives in quality enhancement. This is even more relevant when considering the highly international nature of the music and performing arts professions.

The governance structure and activities of MusiQuE involve stakeholders from both the education sector (at various educational levels) and the professional field of music and performing arts. Considerations on lifelong learning and the needs of the profession are therefore important aspects in MusiQuE's work.

MusiQuE was legally established as a foundation in 2014 and has been registered on the European Quality Assurance Register for Higher Education (EQAR) since 2015.

#### MusiQuE – a subject-specific answer to the Bologna process

MusiQuE is fully based on principles with regard to quality assurance in higher education that have been agreed upon within the European Union and the Bologna Process.

- A. In the *Recommendation of the European Parliament and of The Council of 15 February 2006 on further European cooperation in quality assurance in higher education*<sup>1</sup>, it is recommended that member states:
4. "enable higher education institutions active within their territory to choose among quality assurance or accreditation agencies in the European Register an agency which meets their needs and profile, provided that this is compatible with their national legislation or permitted by their national authorities;
  5. allow higher education institutions to work towards a complementary assessment by another agency in the European Register, for example to enhance their international reputation".
- B. In the *Yerevan Communiqué of 2015*<sup>2</sup> in the context of the Bologna Declaration process, EHEA ministers committed to allowing:
- "higher education institutions to use a suitable EQAR registered agency for their external quality assurance process, respecting the national arrangements for the decision-making on QA outcomes".

#### Challenges of and obstacles to subject-specific cross-border quality

Despite these agreed principles, MusiQuE, as an EQAR-registered quality enhancement organisation active at transnational level, faces **challenges and obstacles** on a daily basis, which can be divided into two situations:

1. In several EHEA countries, MusiQuE is still **not allowed to function despite its EQAR registration**: clear evidence of this situation can be found at <https://www.eqar.eu/xb/cross-border-qa/mapping-system-openness-to-cbqa/>.
2. In several EHEA countries where MusiQuE is **formally allowed to function based on its EQAR registration**, the following obstacles are experienced:

<sup>1</sup> See <https://op.europa.eu/en/publication-detail/-/publication/aa1b7d1f-43f1-4f50-bbb7-462f11909f85/language-en>.

<sup>2</sup> See [https://www.ehea.info/media/ehea\\_info/file/2015\\_Yerevan70/7/YerevanCommuniquéFinal\\_613707.pdf](https://www.ehea.info/media/ehea_info/file/2015_Yerevan70/7/YerevanCommuniquéFinal_613707.pdf).

<sup>3</sup> See: *Countries not recognising foreign agencies as part of the national external QA requirements.*





3 – By 2025, MusiQuE's procedures:

**continue to promote, embed and disseminate  
a broadly supported quality culture  
with respect to  
the specific contexts and individual  
characteristics of music education  
and its institutions**



## 3 key principles

- **Quality enhancement**
- **Subject-specificity**
- **International perspectives**





## MusiQuE services (since 2014)

- **Accreditation procedures** for institutions or (joint) programmes
- **Quality enhancement reviews** for institutions or (joint) programmes
- **Joint procedures** with other national quality assurance and accreditation agencies
- **Evaluations of research activities**
- **Quality Assurance Desk**



## Additional services offered

- **Critical Friend Reviews** focused on programmes & departments or transversal areas (content-driven form of external quality review)
- **Benchmarking – bench-learning projects**
- **Consultative visits**
- **Various evaluation procedures (calls for tenders, project evaluations)**



# Identity Trends in the Sector

(2022)

- Diversity and diversification: the changing Global environment
- Students: student-centredness—engagement, feedback, support
- Curriculum: continuing evolving issues
- Staff and resources: professional development, space & technology.





4 – By 2025, MusiQuE is:

**By 2025, MusiQuE is a well-established organisation relying on high personnel expertise and on a sound financial basis**



## Personnel expertise

- Large pool of qualified and trained experts
- A highly competent Board
- A professional team







# Increased Financial Stability

- Despite Covid hit





# MUSICQuE

Music Quality Enhancement

## Conclusion



Association Européenne des  
Conservatoires, Académies de  
Musique et Musikhochschulen



PEARLE  
LIVE PERFORMANCE EUROPE

emu  
MUSIC SCHOOL UNION . EU



European Association for Music in Schools



CONTACT: [info@musique-qe.eu](mailto:info@musique-qe.eu)



[@MusiQuE](#)



[@MusiQuE.QE](#)



[@MusiQuE\\_QE](#)



[musique-qe.eu](#)