

TOWARDS CONTINUOUS AND CONTENT-DRIVEN QUALITY ENHANCEMENT: MUSIQUE'S CRITICAL FRIEND REVIEW

Why a Critical Friend Review?

A Critical Friend Review has the following objectives, in addition to those pertaining to the regular quality enhancement review

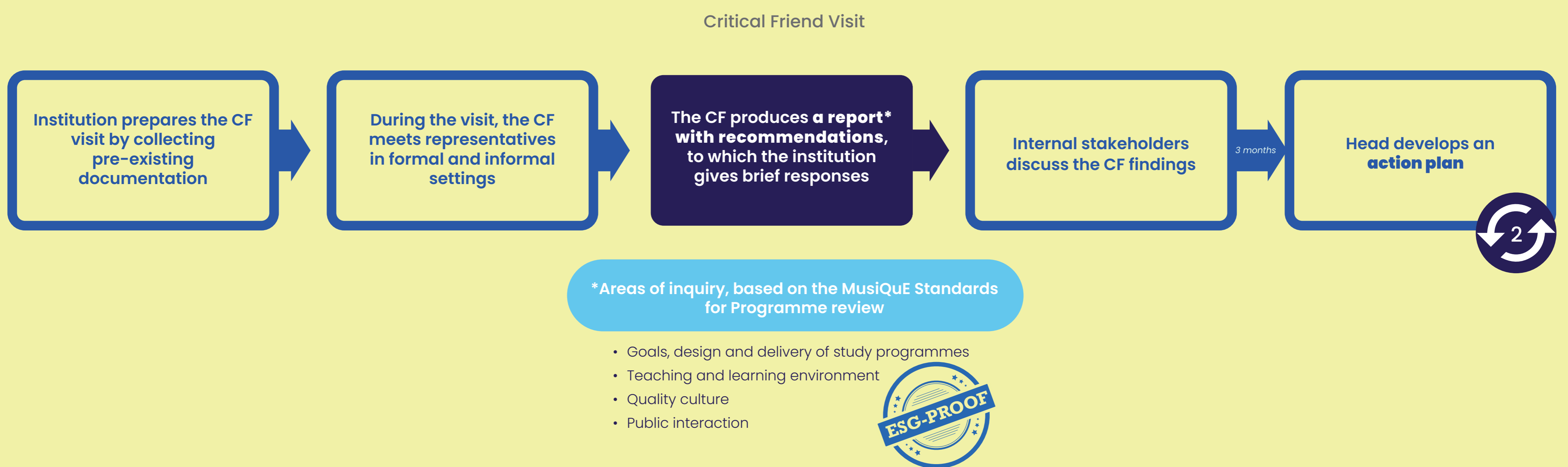
- to increase the relevance of quality enhancement processes for students and teachers, aiming at their greater involvement in QA
- to better connect IQA and EQA and integrate these within the institution's quality culture
- to promote a content-driven approach to quality enhancement while ensuring disciplinary diversity

Who is a Critical Friend?

A Critical Friend is a highly specialised professional peer whose visit focuses entirely on:

- a specific study programme, group of programmes, discipline, department or faculty
- cross-departmental or transversal areas such as governance, quality assurance, research...

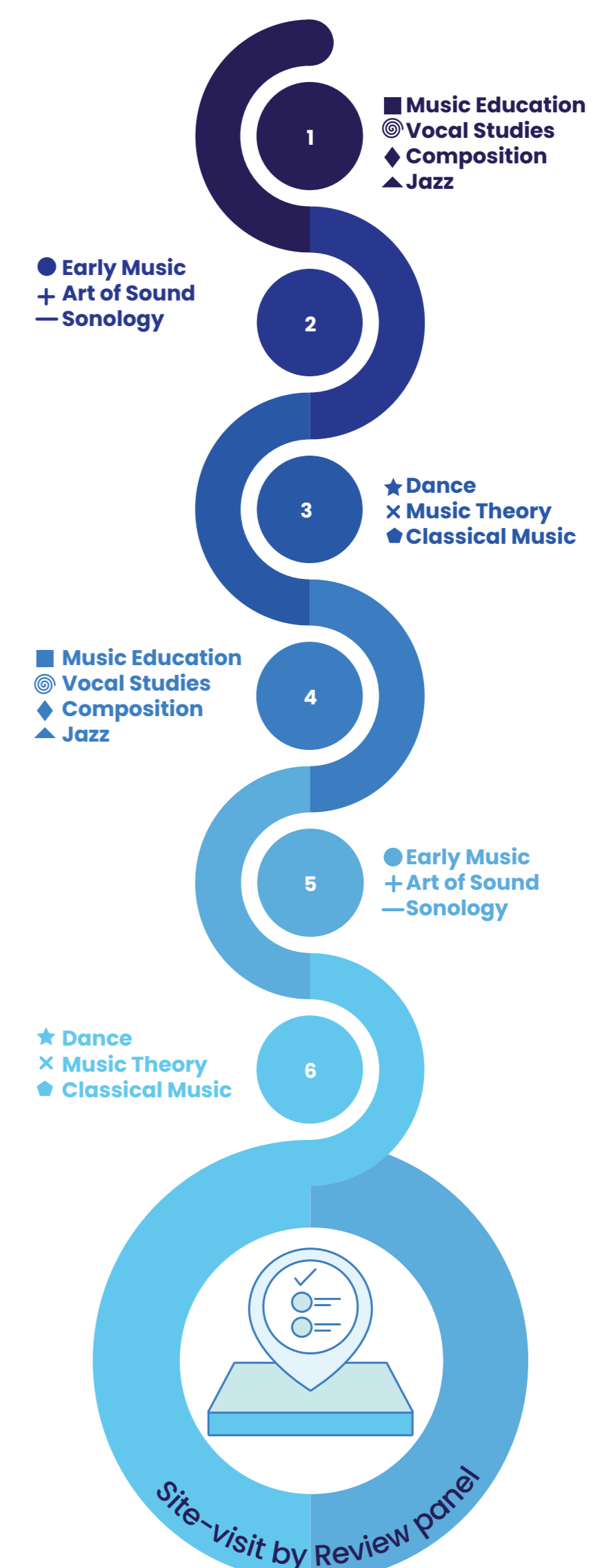
Regular Critical Friend visits are organised within a period of six or seven years. A regular panel visit may be planned after the last Critical Friend visit:



Example of CF review cycle calendar based on cross-departmental areas:

CALENDAR OF CRITICAL FRIENDS' VISITS PER ACADEMIC YEAR	1	2	3	4	5	6
Critical Friends (CFs)	2022-2023	2023-2024	2024-2025	2025-2026	2026-2027	2027-2028
CF1 – Collaborative Music Making (Ensembles)						
CF2 – Core Studies Requirements (Theory and Musicianship Skills)						
CF3 – Professional Integration & Career Development						
CF4 – Research						
CF5 – Governance and operations						
Online meeting of all Critical Friends						
Site-visit by Review Panel						

Example of discipline-focused CF review: visited departments each year within a period of 6 years



Benefits for institutions

- The Critical Friend allows for a more in-depth and consistent review process
- This procedure promotes a positive and vibrant QA dynamic in the department
- This procedure provides a quality enhancement-led approach, based on qualified recommendations
- Both educational quality and artistic standards are taken into account
- This procedure enables a more organic and continuous self-evaluation process